



Department of Commerce

Innovation is in our nature.

WASHINGTON MARITIME



blue

Washington Maritime Blue Strategy Overview and Process

Accelerating Innovation for a
Sustainable Maritime Future

Updated 25 June 2018

Washington Maritime BLUE Initiative

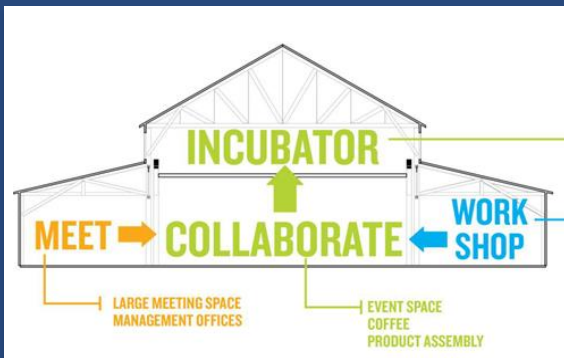


Create a **Strategy** for accelerating the BLUE economy, technology innovation and sustainability in Washington's maritime industry.

Formalize the **Cluster** as a focal point for coordination, incubation, capital investment & commercialization.



Establish a **Maritime Innovation Center** for R&D and commercialization of innovation technology through public/private partnerships.



What is our “BLUE Economy”?

For our purposes:

The development of maritime business, technology and practices that promote a sustainable future contributing to ecological health, thriving communities and economic growth.

Washington Maritime BLUE Strategy

WASHINGTON MARITIME



blue

Vision

Washington State will be home to the nation's most sustainable and competitive maritime industry by 2050.

Governor's Maritime Innovation Council

Co-Chairs

Rep. Gael Tarleton, WA State Legislature - Frank Foti, Vigor
Dennis McLerran, Fmr EPA Region 10

Members

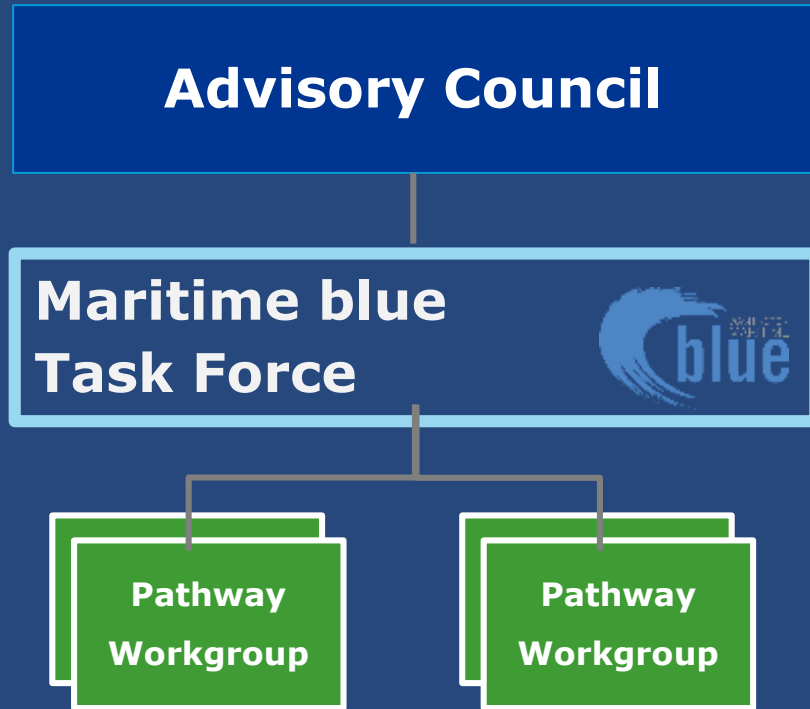
Sen. Ann Rivers, WA State Legislature
Chairman Leonard Forsman, Suquamish Tribal Council
Commissioner Fred Felleman, Port of Seattle
Mayor Laurie Gere, City of Anacortes
Secretary Roger Millar, WSDOT
Director Brian Bonlender, Dept. of Commerce
Director Sheida Sahandy, Puget Sound Partnership
Director Craig Kenworthy, PS Clean Air Agency
Director Eleni Papadakis, Workforce Training Board

John Wolfe, Northwest Seaport Alliance
Paul Stevens, Saltchuk
Joe Ritzman, SSA Marine
Stefanie Moreland, Trident Seafoods
Vince O'Halloran, Maritime Trades / AFL-CIO
Bob Miyamoto, UW Applied Physics Lab
John Dwyer, USCG Sector Puget Sound
Bruce Anderson, Starcrest Consulting
Barbara "b.g." Nabors-Glass, Seattle Goodwill



Department of Commerce
Innovation is in our nature.

Stakeholder Process Overview



Co-Chairs
|
Steering
Committee
|
Workgroup
Leader(s)

Engagement of Other Organizations

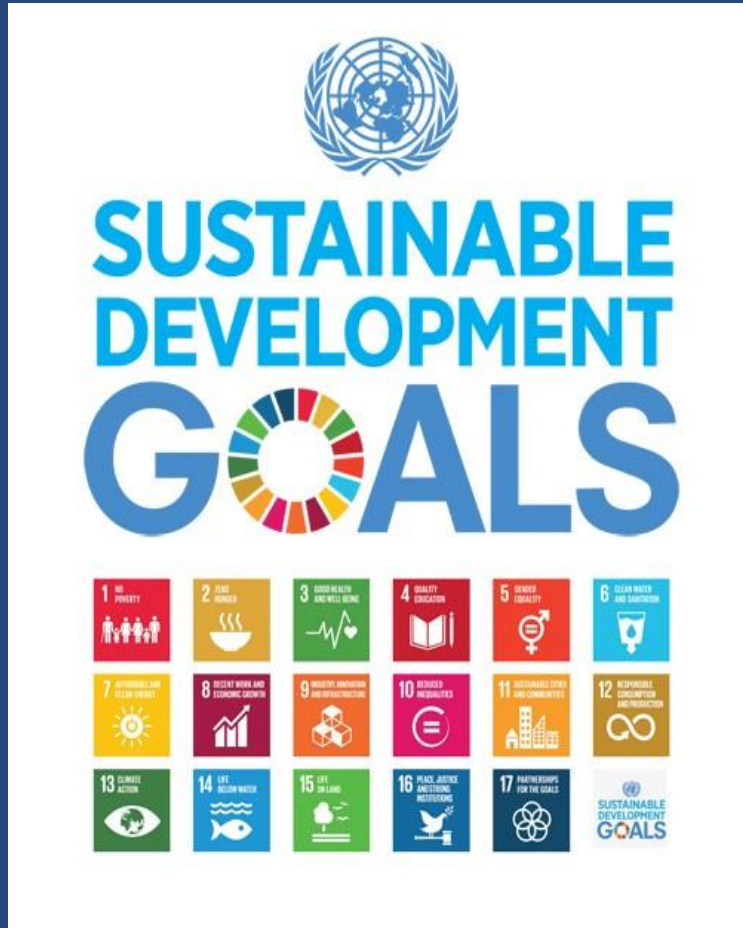
- Industry
- WA Maritime Federation
- Port and Marine Trade Communities
- Environmental NGO's
- Government Agencies & municipalities
- Workforce and Training System
- Trade & Labor
- Tribes

Facilitation, Coordination and Communication



Department of Commerce

Values for Sustainable Development



Competitive Blue Economy: building a strong business climate, investment, efficient regulation for innovation and infrastructure.

Healthy Ecosystems: committed to restoring and sustaining the health of our coastal and marine ecosystems.

Resilient Communities: consider a social justice lens to all our efforts to ensure thriving and resilient communities.

Strategic Action Areas

The areas of focus, and tools used, to achieve the Goals and Vision of the Plan

- R&D, Demonstration and Incubation
- Policy, Regulation and Finance
- Education and Training
- Best Practices, Standards and Certifications
- Communications, Outreach and Collaboration



Maritime Blue Strategy Framework

Strategic Goals

What will success look like?

High Caliber
Workforce

Low Carbon
Industry

Global
Innovation Hub

Competitive
Gateway

Competitive
Cluster

Development Pathways

How will we achieve the goals?

Workforce Development

Deep Decarbonization

Blue Innovation

Working Waterfronts

Cluster Coordination

Pathways

Action Areas

What tools will we use?

R&D,
Demonstration,
Incubation

Education &
Training

Best Practices,
Standards &
Certifications

Policy, Regulation &
Finance

Communications,
Outreach &
Collaboration

Values

What will guide our actions?

Competitive BLUE Economy

Healthy Ecosystems

Engaged & Resilient
Communities

Goal: Low Carbon Industry



Pathway: Deep Decarbonization

Accelerate Competitive Decarbonization through research & development, pilot projects, commercialization and implementation.



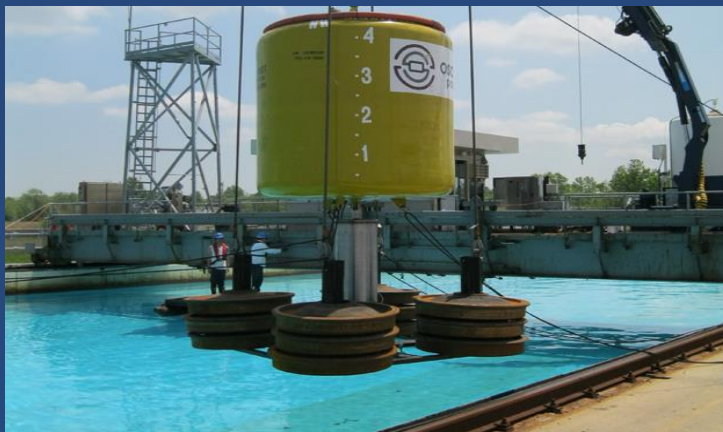
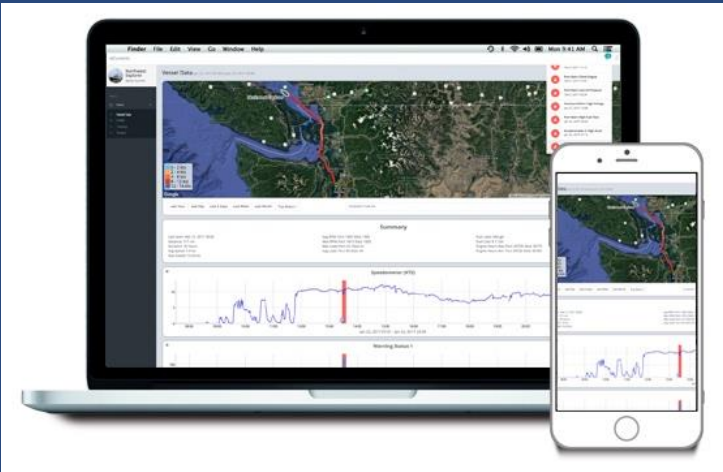
- Electrification
- Technology acceleration
- Alternative fuels
- Infrastructure needs

Goal: Global Innovation Hub

Pathway: Blue Innovation

Focus on key areas of Existing Excellence through R&D and commercialization through public/private partnerships.

- Digital transformation
- Leverage ocean sciences
- Advanced materials and manufacturing
- Fishing fleet modernization
- Marine renewables



Goal: Competitive Gateway



Pathway – Working Waterfronts

Investing in technology and best practices to maximize efficiency and service.

- Smart Ports
- Infrastructure Strategy
- Regulatory Climate
- Green Gateway

Goal: High Caliber, 21st Century Workforce



Pathway - Workforce Development

Next generation of an Inclusive and Diverse maritime workforce with technological expertise and access to clean, healthy, living wage jobs.



- Career-connected learning
- Apprenticeships
- Inclusivity / support & outreach
- Career pathways
- Domestic Center of Excellence

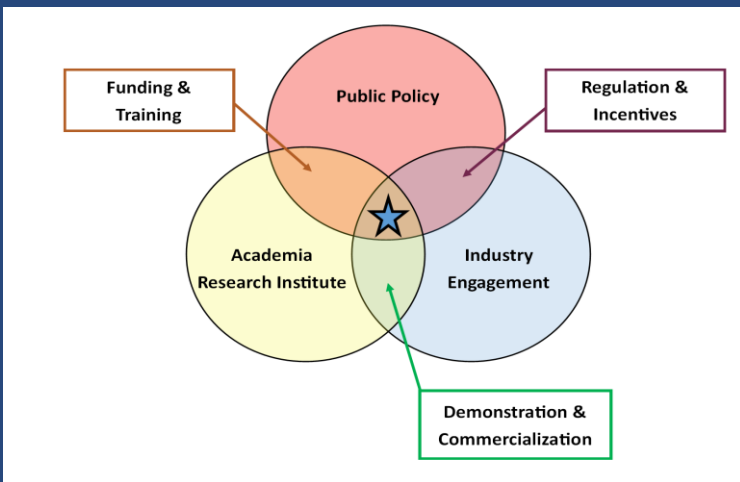
Goal: Competitive Cluster



Pathway – Cluster Coordination

Create a Focal Point for partnerships, incubation, capital investment & commercialization.

- Communications & marketing
- Funding & investment
- Knowledge & Innovation Collaboration
- Cross-cluster collaboration
- Policy advocacy
- Strategy Review



What is a Cluster?

Formal and organized Ocean/Maritime Clusters have emerged as organizational entities that aim to enhance the competitiveness and collaboration among their industry participants, related institutions, and other stakeholders.



General cluster development

- Networking activities
- Facilitate collaboration
- Strengthen the knowledge base
- Improve practices and efficiency
- Attract investors and talent
- Communications and marketing
- Drive commercialization
- Connect to education and training
- Advocacy and awareness

Knowledge collaboration

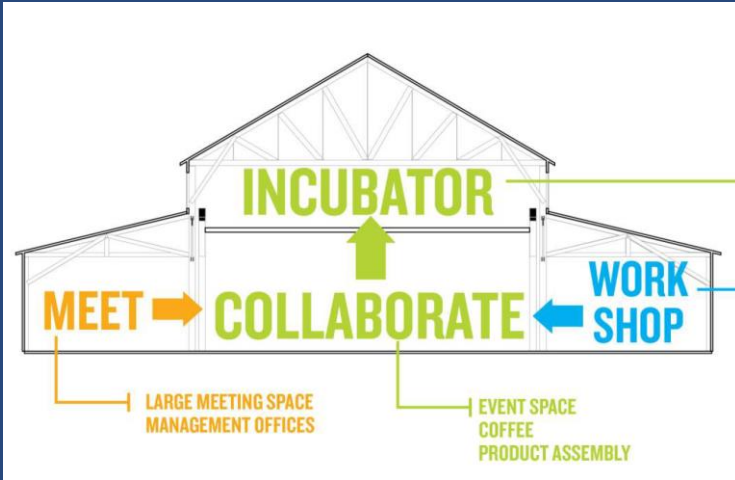
- R&D and education initiatives
- Build international relationships
- Direct Advisory services

Innovation collaboration

- Set research priorities
- Administer access to public funding
- Accelerate technology development
- Joint industry projects

Cluster to cluster collaboration

Maritime Innovation Center



Establish a **Focul Point** for R&D, commercialization of innovation technology and workforce development through public/private partnerships.

WHY

Support Startups, SME's, product development and recruitment
Build relationships across sector, research, training and investors
Create a Center of Excellence for maritime sustainability

HOW

Port of Seattle leading development at Fisherman's Terminal
Joint public and private funding
Integrated business plan
Stakeholder engagement for center focus and key partnerships

Project Schedule





Department of Commerce
Innovation is in our nature.

Joshua Berger

Governor's Maritime Sector Lead

Joshua.berger@commerce.wa.gov

2001 6th Avenue, Suite 2600

Seattle, WA 98121-2895

Phone: 206-256-6104

www.maritimefederation.com/blue

